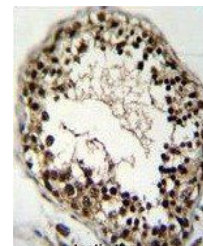
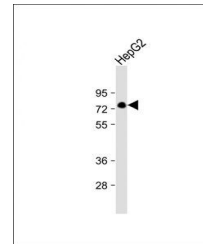


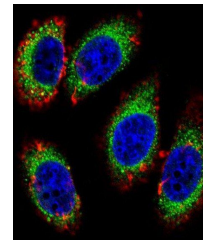
Product Datasheet

KHSRP antibody (orb29682)

Description	Synthetic peptide.
Species/Host	Rabbit
Reactivity	Human
Conjugation	Unconjugated
Tested Applications	IF, IHC-P, WB
Immunogen	Synthetic Peptide
Target	KHSRP
Form/Appearance	Purified polyclonal antibody supplied in PBS with 0.09% (W/V) sodium azide. This antibody is purified through a protein A column, followed by peptide affinity purification.
Storage	Maintain refrigerated at 2-8°C for up to 2 weeks. For long term storage store at -20°C in small aliquots to prevent freeze-thaw cycles
Note	For research use only
Isotype	Rabbit IgG
Clonality	Polyclonal
MW	73115
Uniprot ID	Q92945
NCBI	NP_003676.2
Dilution Range	WB 1:50-1:100
Expiration Date	12 months from date of receipt.



Immunohistochemical staining of human te...



Immunofluorescence analysis of U-251MG C...