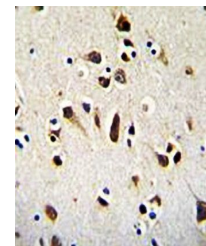
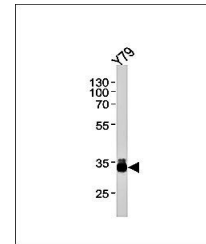


Product Datasheet

OTX2 antibody (orb29654)

Description	Rabbit polyclonal antibody to ITIH1 belongs to the ITIH family. It is vital as a carrier of hyaluron...
Species/Host	Rabbit
Reactivity	Human
Conjugation	Unconjugated
Tested Applications	IHC-P, WB
Immunogen	Synthetic Peptide
Target	OTX2
Form/Appearance	Purified polyclonal antibody supplied in PBS with 0.09% (W/V) sodium azide. This antibody is purified through a protein A column, followed by peptide affinity purification.
Storage	Maintain refrigerated at 2-8°C for up to 2 weeks. For long term storage store at -20°C in small aliquots to prevent freeze-thaw cycles
Note	For research use only
Isotype	Rabbit IgG
Clonality	Polyclonal
MW	31636
Uniprot ID	P32243
NCBI	NP_001257454.1 , NP_001257453.1 , NP_758840.1 , NP_068374.1 , NP_001257452.1
Dilution Range	WB: 1:1000, IHC-P: 1:50-100
Expiration Date	12 months from date of receipt.



Immunohistochemical analysis of formalin...