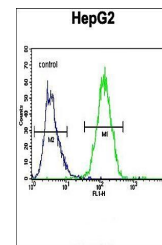
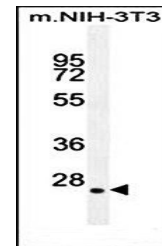


Product Datasheet

GFER antibody (orb29646)

Description	Rabbit polyclonal antibody to GPC6 belongs to the glypican family. It is highly expressed in fetal k...
Species/Host	Rabbit
Reactivity	Mouse
Conjugation	Unconjugated
Tested Applications	FC, WB
Immunogen	Synthetic Peptide
Target	GFER
Form/Appearance	Purified polyclonal antibody supplied in PBS with 0.09% (W/V) sodium azide. This antibody is prepared by Saturated Ammonium Sulfate (SAS) precipitation followed by dialysis against PBS.
Storage	Maintain refrigerated at 2-8°C for up to 2 weeks. For long term storage store at -20°C in small aliquots to prevent freeze-thaw cycles
Note	For research use only
Isotype	Rabbit IgG
Clonality	Polyclonal
MW	23449
Uniprot ID	P55789
NCBI	NP_005253.3
Dilution Range	WB: 1:1000, FACS: 1:10-50
Expiration Date	12 months from date of receipt.



Flow cytometric analysis of HepG2 cells
...