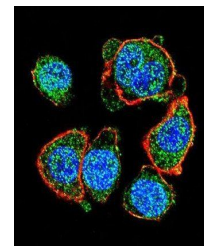
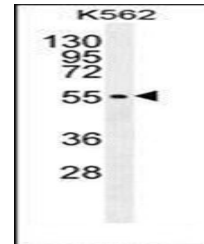


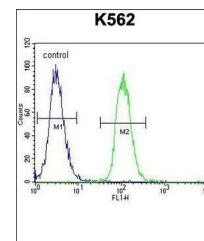
Product Datasheet

MITF antibody (orb29533)

Description	Peptide affinity purified rabbit polyclonal antibody.
Species/Host	Rabbit
Reactivity	Human
Conjugation	Unconjugated
Tested Applications	FC, IF, WB
Immunogen	Synthetic Peptide
Target	MITF
Form/Appearance	Purified polyclonal antibody supplied in PBS with 0.09% (W/V) sodium azide. This antibody is purified through a protein A column, followed by peptide affinity purification.
Storage	Maintain refrigerated at 2-8°C for up to 2 weeks. For long term storage store at -20°C in small aliquots to prevent freeze-thaw cycles
Note	For research use only
Isotype	Rabbit IgG
Clonality	Polyclonal
MW	58795
Uniprot ID	O75030
NCBI	NP_000239.1 , NP_001171896.1 , NP_937802.1 , NP_937821.2 , NP_937801.1 , NP_006713.1 , NP_937820.1
Dilution Range	WB: 1:1000, IF/ICC: 1:10-50, FACS: 1:10-50
Expiration Date	12 months from date of receipt.



Confocal immunofluorescence analysis of ...



Flow cytometric analysis of K562 cells (...)