

---

## Product Datasheet

### Reg3 gamma antibody (orb2883)

**Description**

Reg3 gamma antibody

**Species/Host**

Rabbit

**Reactivity**

Human, Mouse, Rat

**Conjugation**

Unconjugated

**Tested**

IHC-P, WB

**Applications**
**Immunogen**

KLH conjugated synthetic peptide derived from human Reg3 gamma. Please contact us for the exact immunogen sequence. The peptide is available as orb374812.

**Target**

Reg3 gamma

**Form/Appearance**

10 mM PBS, 0.02% sodium azide

**Concentration**

- 100 µg (in 200 µl): 0.5 mg/ml- 200 µg (in 400 µl): 0.5 mg/ml

**Storage**

Store at 4°C for up to two weeks. For long term storage, aliquot and store at -20°C, avoid freeze/thaw cycles.

**Note**

For research use only

**Isotype**

IgG

**Clonality**

Polyclonal

**Purity**

Polyclonal antibodies are purified by peptide affinity chromatography

**MW**

19 kDa

**Uniprot ID**
[O09049](#), [Q6UW15](#)
**NCBI**
[001008388](#), [21](#), [001008387](#), [11](#)
**Entrez**
[130120](#)
**Dilution Range**

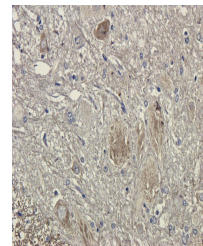
WB: 1:200-2000, IHC-P: 1:50-500 (based on 0.5 mg/ml)

**Expiration Date**

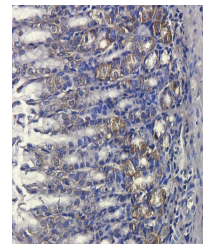
12 months from date of receipt.



Immunohistochemical staining of mouse te...



IHC-P image of rat spinal cord tissue us...



IHC-P staining of rat stomach tissue usi...