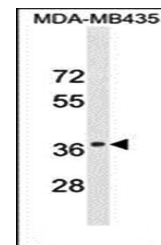
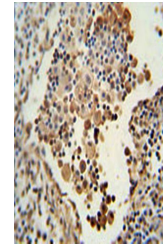


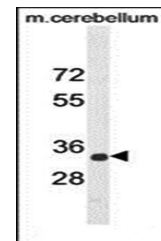
Product Datasheet

CADM1 antibody (orb28626)

Description	Rabbit polyclonal antibody to CADM1 (also known as cell adhesion molecule 1, Nectin-like protein 2, ...
Species/Host	Rabbit
Reactivity	Human, Mouse
Conjugation	Unconjugated
Tested Applications	IHC-P, WB
Immunogen	Synthetic Peptide
Target	CADM1
Form/Appearance	Purified polyclonal antibody supplied in PBS with 0.09% (W/V) sodium azide. This antibody is purified through a protein A column, followed by peptide affinity purification.
Storage	Maintain refrigerated at 2-8°C for up to 2 weeks. For long term storage store at -20°C in small aliquots to prevent freeze-thaw cycles
Note	For research use only
Isotype	Rabbit IgG
Clonality	Polyclonal
MW	48509
Uniprot ID	Q9BY67
NCBI	NP_001091987.1 , NP_055148.3
Dilution Range	WB: 1:1000, IHC-P: 1:50-100
Expiration Date	12 months from date of receipt.



Western blot analysis of CADM1 antibody ...



Western blot analysis of CADM1 antibody ...