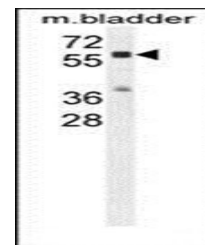
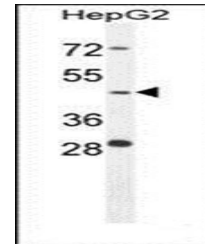


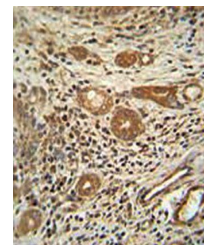
Product Datasheet

CTSA antibody (orb28380)

Description	Peptide affinity purified rabbit polyclonal antibody.
Species/Host	Rabbit
Reactivity	Human, Mouse
Conjugation	Unconjugated
Tested Applications	IHC-P, WB
Immunogen	Synthetic Peptide
Target	CTSA
Form/Appearance	Purified polyclonal antibody supplied in PBS with 0.09% (W/V) sodium azide. This antibody is purified through a protein A column, followed by peptide affinity purification.
Storage	Maintain refrigerated at 2-8°C for up to 2 weeks. For long term storage store at -20°C in small aliquots to prevent freeze-thaw cycles
Note	For research use only
Isotype	Rabbit IgG
Clonality	Polyclonal
MW	54466
Uniprot ID	P10619
NCBI	NP_000299.2 , NP_001161066.1 , NP_001121167.1
Dilution Range	IHC-P: 1:50-100, WB: 1:1000
Expiration Date	12 months from date of receipt.



Western blot analysis of mouse bladder t...



Immunohistochemical analysis of formalin...