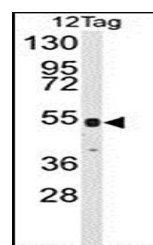
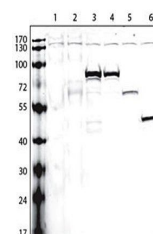


Product Datasheet

V5 Tag antibody (orb28008)

Description	Rabbit polyclonal antibody to VSV-g Tag belongs to the Rhabdoviridae family. The VSV-G epitope tag i...
Species/Host	Rabbit
Conjugation	Unconjugated
Tested Applications	WB
Immunogen	Synthetic Peptide
Target	KLH conjugated synthetic peptide encoding the V5 tag (GKPIPPLLGLDST) was used as antigen.
Form/Appearance	Purified polyclonal antibody supplied in PBS with 0.09% (W/V) sodium azide. This antibody is prepared by Saturated Ammonium Sulfate (SAS) precipitation followed by dialysis against PBS.
Storage	Maintain refrigerated at 2-8°C for up to 2 weeks. For long term storage store at -20°C in small aliquots to prevent freeze-thaw cycles
Note	For research use only
Isotype	Rabbit IgG
Clonality	Polyclonal
Dilution Range	WB: 1:1000
Expiration Date	12 months from date of receipt.



Western blot analysis of 12tag protein (...)