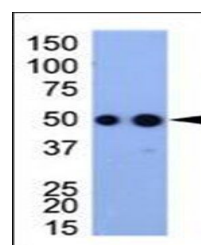
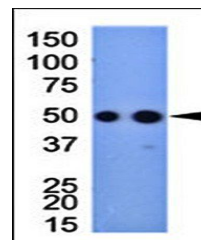


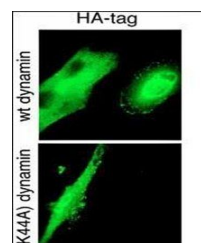
Product Datasheet

HA Tag antibody (orb27986)

Description	Rabbit polyclonal antibody to DYKDDDDK Tag is used extensively as a general epitope tag in expressio...
Species/Host	Rabbit
Conjugation	Unconjugated
Tested Applications	ChIP, IF, WB
Immunogen	Synthetic Peptide
Target	KLH conjugated synthetic peptide encoding HA tag (CYPYDVPDYAYPYDVPDYA) was used as antigen.
Form/Appearance	Purified polyclonal antibody supplied in PBS with 0.09% (W/V) sodium azide. This antibody is prepared by Saturated Ammonium Sulfate (SAS) precipitation followed by dialysis against PBS.
Storage	Maintain refrigerated at 2-8°C for up to 2 weeks. For long term storage store at -20°C in small aliquots to prevent freeze-thaw cycles
Note	For research use only
Isotype	Rabbit IgG
Clonality	Polyclonal
Dilution Range	WB: 1:1000, IF/ICC: 1:10-50, ChIP: 1:100
Expiration Date	12 months from date of receipt.



Western blot analysis of protein bacteriophage.



Confocal immunofluorescence analysis of ...