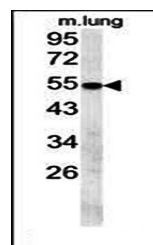
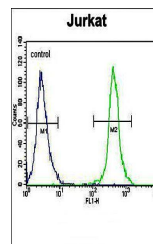


Product Datasheet

SLC43A2 antibody (orb27910)

| | |
|----------------------------|------------------------------------------------------------------------------------------------------------------------------------------------------------------------------|
| Description | Peptide affinity purified rabbit polyclonal antibody. |
| Species/Host | Rabbit |
| Reactivity | Human, Mouse |
| Conjugation | Unconjugated |
| Tested Applications | FC, WB |
| Immunogen | Synthetic Peptide |
| Target | SLC43A2 |
| Form/Appearance | Purified polyclonal antibody supplied in PBS with 0.09% (W/V) sodium azide. This antibody is purified through a protein A column, followed by peptide affinity purification. |
| Concentration | p>0.50 mg/mL |
| Storage | Maintain refrigerated at 2-8°C for up to 2 weeks. For long term storage store at -20°C in small aliquots to prevent freeze-thaw cycles |
| Note | For research use only |
| Isotype | Rabbit IgG |
| Clonality | Polyclonal |
| MW | 62747 |
| Uniprot ID | Q8N370 |
| NCBI | NP_689559.1 |
| Dilution Range | WB: 1:1000, FACS: 1:10-50 |
| Expiration Date | 12 months from date of receipt. |



Western blot analysis of SLC43A2 antibody...