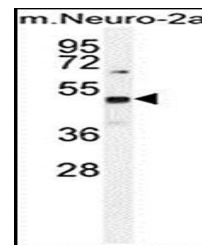
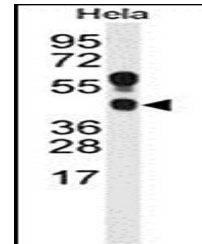


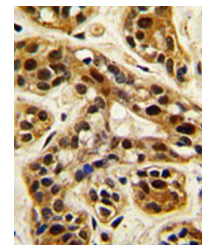
Product Datasheet

PRMT1 antibody (orb27862)

Description	Rabbit polyclonal antibody to PRMT2 is a member of the protein arginine N-methyltransferase family. ...
Species/Host	Rabbit
Reactivity	Human, Mouse
Conjugation	Unconjugated
Tested Applications	IHC-P, WB
Immunogen	Synthetic Peptide
Target	PRMT1
Form/Appearance	Purified polyclonal antibody supplied in PBS with 0.09% (W/V) sodium azide. This antibody is prepared by Saturated Ammonium Sulfate (SAS) precipitation followed by dialysis against PBS.
Storage	Maintain refrigerated at 2-8°C for up to 2 weeks. For long term storage store at -20°C in small aliquots to prevent freeze-thaw cycles
Note	For research use only
Isotype	Rabbit IgG
Clonality	Polyclonal
MW	42462
Uniprot ID	Q99873
NCBI	NP_938074.2 , NP_001527.3
Dilution Range	WB: 1:1000, IHC-P: 1:10-50
Expiration Date	12 months from date of receipt.



Western blot analysis of mouse Neuro-2a ...



Immunohistochemical analysis of formalin...