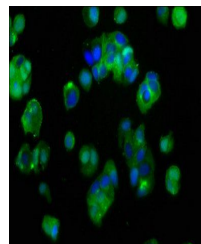


Product Datasheet

IGF1R antibody (orb27032)

Description	IGF1R antibody
Species/Host	Rabbit
Reactivity	Human
Conjugation	Unconjugated
Tested Applications	ELISA, IF
Immunogen	Recombinant Human Insulin-like growth factor 1 receptor protein (763-931AA)
Target	IGF1R
Preservatives	Preservative: 0.03% Proclin 300. Constituents: 50% Glycerol
Form/Appearance	Liquid
Storage	Maintain refrigerated at 2-8°C for up to 2 weeks. For long term storage store at -20°C in small aliquots to prevent freeze-thaw cycles.
Note	For research use only
Isotype	IgG
Clonality	Polyclonal
Uniprot ID	P08069
Dilution Range	IF:1:200-500
Expiration Date	12 months from date of receipt.



Immunofluorescence staining of MCF-7 cel...