

Product Datasheet

Chicken IgG (orb2652774)

Description	Chicken IgG
Conjugation	Unconjugated
Tested Applications	ELISA, IHC, SDS-PAGE, WB
Preservatives	Preservative: 0.01% (w/v) Sodium Azide. Stabilizer: None. 0.02 M Potassium Phosphate, 0.15 M Sodium Chloride, pH 7.2
Form/Appearance	Lyophilized
Concentration	10.0 mg/mL
Storage	Store vial at 4° C prior to restoration. Restore with 1.0 mL of deionized water (or equivalent). For extended storage aliquot contents and freeze at -20° C or below. Avoid cycles of freezing and thawing. Centrifuge product if not completely clear after standing at room temperature. This product is stable for several weeks at 4° C as an undiluted liquid. Dilute only prior to immediate use.
Note	For research use only
Application notes	Chicken IgG whole molecule has been tested in SDS-Page and can be utilized as a control or standard reagent in Western Blotting and ELISA experiments. Reconstitution Buffer: Restore with deionized water (or equivalent). Reconstitution Volume: 1.0 mL
Isotype	IgG
Purity	Chicken IgG whole molecule was prepared from normal serum by a multi-step process which includes delipidation, salt fractionation and ion exchange chromatography followed extensive dialysis against the buffer stated above. Chicken IgG whole molecule assayed by immunoelectrophoresis resulted in a single precipitin arc against anti-Chicken IgG and anti-Chicken Serum.
Source	Chicken

Biorbyt Ltd.

7 Signet Court, Swann's Road,
Cambridge, CB5 8LA, United Kingdom
Email: info@biorbyt.com, support@biorbyt.com
Phone: [+44 \(0\) 1223 859-353](tel:+44(0)1223859353) | Fax: [+1 \(415\) 651-8558](tel:+1(415)6518558)

Biorbyt LLC.

68 TW Alexander Drive,
Durham, NC, 27713, United States
Email: info@biorbyt.com, support@biorbyt.com
Phone: [+1 \(415\) 906-5211](tel:+1(415)9065211) | Fax: [+1 \(415\) 651-8558](tel:+1(415)6518558)

Hazard Information

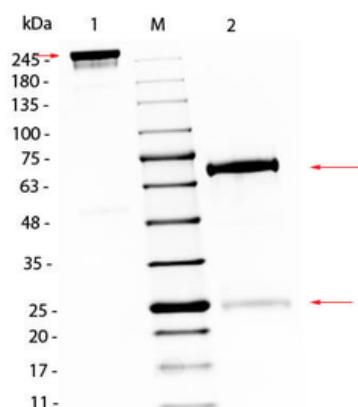
This product is for research use only and is not intended for therapeutic or diagnostic applications. Please contact a technical service representative for more information. All products of animal origin manufactured by Biorbyt are derived from starting materials of North American origin. Collection was performed in United States Department of Agriculture (USDA) inspected facilities and all materials have been inspected and certified to be free of disease and suitable for exportation. All properties listed are typical characteristics and are not specifications. All suggestions and data are offered in good faith but without guarantee as conditions and methods of use of our products are beyond our control. All claims must be made within 30 days following the date of delivery. The prospective user must determine the suitability of our materials before adopting them on a commercial scale. Suggested uses of our products are not recommendations to use our products in violation of any patent or as a license under any patent of Biorbyt, Inc. If you require a commercial license to use this material and do not have one, then return this material, unopened to: Rockland Inc., P.O. BOX 5199, Limerick, Pennsylvania, USA.

Dilution Range

ELISA: User Optimized, IHC: User Optimized, WB: User Optimized

Expiration Date

6 months from date of receipt.



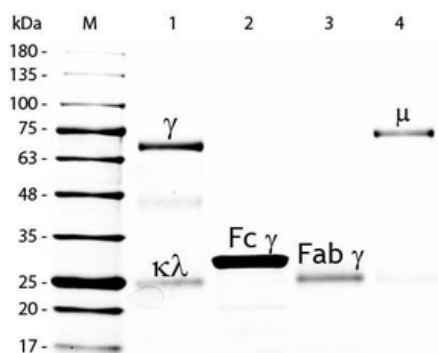
SDS PAGE of Chicken IgG/IgY Whole Molecule. Lane 1: Non-Reduced Chicken IgG Whole Molecule. Lane 2: 5 μ l Opal Prestained Marker. Lane 3: Reduced Chicken IgG Whole Molecule. Load: 1 μ g per lane. Predicted/Observed size: Non-Reduced at 160 kDa/Observed at 245 kDa; Reduced at 72, 25 kDa. Non-reduced IgG migrates slightly higher.

Biorbyt Ltd.

7 Signet Court, Swann's Road,
Cambridge, CB5 8LA, United Kingdom
Email: info@biorbyt.com, support@biorbyt.com
Phone: [+44 \(0\) 1223 859-353](tel:+44(0)1223859353) | Fax: [+1 \(415\) 651-8558](tel:+1(415)6518558)

Biorbyt LLC.

68 TW Alexander Drive,
Durham, NC, 27713, United States
Email: info@biorbyt.com, support@biorbyt.com
Phone: [+1 \(415\) 906-5211](tel:+1(415)9065211) | Fax: [+1 \(415\) 651-8558](tel:+1(415)6518558)



SDS-PAGE of Chicken IgG/IgY Whole Molecule Rhodamine Conjugated (p/n orb346044). Lane M: 5 μ l Opal Prestained Marker. Lane 1: Reduced Chicken IgG Whole Molecule Rhodamine Conjugated (p/n orb346044). Lane 2: Reduced Chicken IgG F(c) Fragment (p/n orb346051). Lane 3: Reduced Chicken IgG Fab Fragment (p/n orb2652771). Lane 4: Reduced Chicken IgM Whole Molecule (p/n orb346054). Load: 1 μ g per lane. Predicted/Observed size: IgG at 72 and 25 kDa; F(c) at 25 kDa; Fab at 25 kDa; IgM at 75 kDa. Observed F(c) Fragment migrates slightly higher. Other bands: Chicken IgG heavy chain alternative splicing variant at approximately 40 kDa in Lane 1.

Biorbyt Ltd.

7 Signet Court, Swann's Road,
Cambridge, CB5 8LA, United Kingdom
Email: info@biorbyt.com, support@biorbyt.com
Phone: [+44 \(0\) 1223 859-353](tel:+44(0)1223859353) | Fax: [+1 \(415\) 651-8558](tel:+1(415)6518558)

Biorbyt LLC.

68 TW Alexander Drive,
Durham, NC, 27713, United States
Email: info@biorbyt.com, support@biorbyt.com
Phone: [+1 \(415\) 906-5211](tel:+1(415)9065211) | Fax: [+1 \(415\) 651-8558](tel:+1(415)6518558)