

Product Datasheet

Mouse IgG1 Antibody / Isotype Control for Mouse (orb2636477)

Description	To serve as a true negative control for various procedures, this mouse monoclonal IgG should be used under the identical conditions and at the same dilution as the rabbit monoclonal antibody being used for a positive reaction.
Species/Host	Mouse
Reactivity	Human
Conjugation	Unconjugated
Tested Applications	FACS, IF, IHC-P, WB
Immunogen	Recombinant full-length human IG1R protein was used as the immunogen for the mouse IgG1 antibody.
Storage	Maintain refrigerated at 2-8°C for up to 2 weeks. For long term storage store at -20°C in small aliquots to prevent freeze-thaw cycles.
Note	For research use only
Application notes	Optimal dilution of the mouse IgG1 antibody should be determined by the researcher.
Formula	0.2 mg/ml in 1X PBS with 0.1 mg/ml BSA (US sourced), 0.05% sodium azide
Isotype	Mouse IgG1, kappa
Clonality	Monoclonal
Clone Number	ICG1/1331
Hazard Information	This mouse IgG1 antibody is available for research use only.

Biorbyt Ltd.

7 Signet Court, Swann's Road,
Cambridge, CB5 8LA, United Kingdom
Email: info@biorbyt.com, support@biorbyt.com
Phone: [+44 \(0\) 1223 859-353](tel:+44(0)1223859353) | Fax: [+1 \(415\) 651-8558](tel:+1(415)6518558)

Biorbyt LLC.

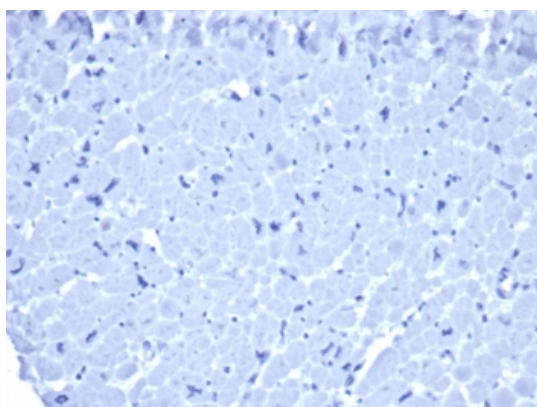
68 TW Alexander Drive,
Durham, NC, 27713, United States
Email: info@biorbyt.com, support@biorbyt.com
Phone: [+1 \(415\) 906-5211](tel:+1(415)9065211) | Fax: [+1 \(415\) 651-8558](tel:+1(415)6518558)

Dilution Range

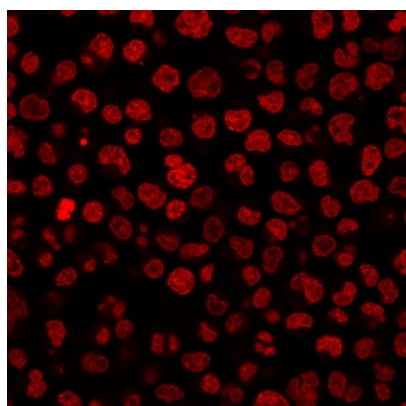
Flow cytometry: application dependent ,Immunofluorescence: application dependent,Immunohistochemistry (FFPE): application dependent,Western blot: application dependent

Expiration Date

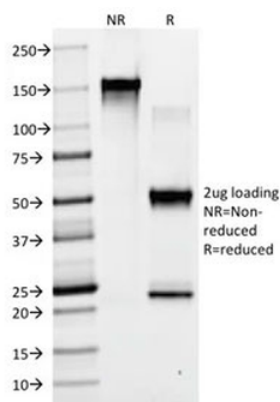
12 months from date of receipt.



IHC staining of FFPE human heart tissue with mouse IgG1 antibody (clone ICG1/ 1331). HIER: boil tissue sections in pH9 10 mM Tris with 1 mM EDTA for 20 min and allow to cool before testing. No staining was observed.



Immunofluorescent staining of PFA-fixed human Raji cells with mouse IgG1 antibody (clone ICG1/ 1331, green) and Reddot nuclear stain (red). No IgG1 staining was observed.



SDS-PAGE analysis of purified, BSA-free mouse IgG1 antibody (clone ICG1/ 1331) as confirmation of integrity and purity.

Biorbyt Ltd.

7 Signet Court, Swann's Road,
Cambridge, CB5 8LA, United Kingdom
Email: info@biorbyt.com, support@biorbyt.com
Phone: [+44 \(0\) 1223 859-353](tel:+44(0)1223859353) | Fax: [+1 \(415\) 651-8558](tel:+1(415)6518558)

Biorbyt LLC.

68 TW Alexander Drive,
Durham, NC, 27713, United States
Email: info@biorbyt.com, support@biorbyt.com
Phone: [+1 \(415\) 906-5211](tel:+1(415)9065211) | Fax: [+1 \(415\) 651-8558](tel:+1(415)6518558)