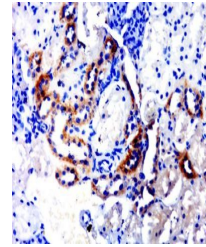


Product Datasheet

SLC39A11 antibody (orb2624)

Description	SLC39A11 antibody
Species/Host	Rabbit
Conjugation	Unconjugated
Tested Applications	ELISA, ICC, IF, IHC-Fr, IHC-P, WB
Immunogen	KLH conjugated synthetic peptide derived from human SLC39A11 (251-342/342 aa)
Target	SLC39A11
Preservatives	0.01M TBS(pH7.4) with 1% rAlbumin, 0.03% Proclin300 and 50% Glycerol.
Form/Appearance	Liquid
Concentration	1mg/ml
Storage	Shipped at 4°C. Store at -20 °C for one year. Avoid repeated freeze/thaw cycles.
Note	For research use only
Isotype	IgG
Clonality	Polyclonal
MW	35 kDa
Uniprot ID	Q8N1S5
Expiration Date	12 months from date of receipt.



Immunohistochemical staining of Rat kidn...