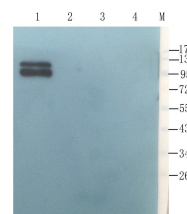


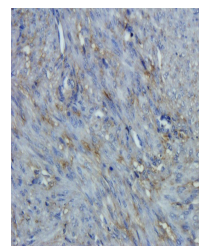
## Product Datasheet

### CD44 antibody (orb259645)

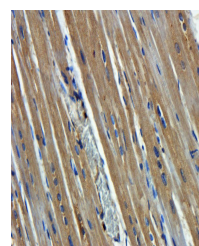
<b>Description</b>	CD44 antibody
<b>Species/Host</b>	Rabbit
<b>Reactivity</b>	Human, Mouse, Porcine, Rat
<b>Conjugation</b>	Unconjugated
<b>Tested Applications</b>	ELISA, IHC-P, WB
<b>Immunogen</b>	KLH conjugated synthetic peptide derived from human CD44. Please contact us for the exact immunogen sequence. The peptide is available as orb374880.
<b>Target</b>	CD44
<b>Form/Appearance</b>	10 mM PBS, 0.02% sodium azide
<b>Concentration</b>	- 100 µg (in 200 µl): 0.5 mg/ml- 200 µg (in 400 µl): 0.5 mg/ml
<b>Storage</b>	Store at 4°C for up to two weeks. For long term storage, aliquot and store at -20°C, avoid freeze/thaw cycles.
<b>Note</b>	For research use only
<b>Isotype</b>	IgG
<b>Clonality</b>	Polyclonal
<b>Purity</b>	Polyclonal antibodies are purified by peptide affinity chromatography
<b>Uniprot ID</b>	<b>P15379, P16070, P26051</b>
<b>NCBI</b>	<b>001001389, 000601</b>
<b>Entrez</b>	<b>960</b>
<b>Dilution Range</b>	WB: 1:200-2000, IHC-P: 1:100-800
<b>Expiration Date</b>	12 months from date of receipt.



Western blot analysis of HeLa cells (lan...



IHC-P image of human endometrial cancer ...



Immunohistochemical staining of pig hear...