
Product Datasheet

VCP Antibody (orb259631)

Description

VCP Antibody

Species/Host

Rabbit

Reactivity

Human, Mouse, Rat

Conjugation

Unconjugated

Tested Applications

FC, ICC, IF, IHC, IHC-Fr, WB

Immunogen

A synthetic peptide corresponding to a sequence at the C-terminus of human VCP (732-760aa RRDHFEEAMRFARRSVSDNDIRKYEMFAQ), identical to the related rat and mouse sequences.

Form/Appearance

Lyophilized

Concentration

Adding 0.2 ml of distilled water will yield a concentration of 500 µg/ml.

Storage

Store at -20°C for one year from date of receipt. After reconstitution, at 4°C for one month. It can also be aliquotted and stored frozen at -20°C for six months. Avoid repeated freeze-thaw cycles.

Note

For research use only

Application notes

WB: The detection limit for VCP is approximately 0.1ng/lane under reducing conditions. Tested Species: In-house tested species with positive results. By Heat: Boiling the paraffin sections in 10mM citrate buffer, pH6.0, for 20mins is required for the staining of formalin/paraffin sections. Other applications have not been tested. Optimal dilutions should be determined by end users. . Add 0.2ml of distilled water will yield a concentration of 500ug/ml.

Isotype

Rabbit IgG

Clonality

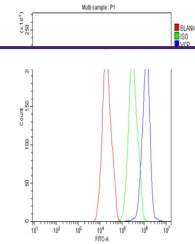
Polyclonal

MW

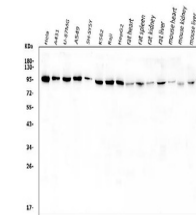
89322 MW

Uniprot ID
[P55072](#)
Expiration Date

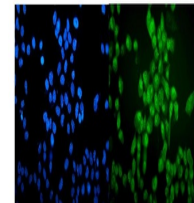
12 months from date of receipt.



Flow Cytometry analysis of HepG2 cells U...



WB:1:HeLa;2:A431;3:U-87MG;4:A549;5:SH-SY...



IF analysis of VCP using anti-VCP antibo...