
Product Datasheet

Glucose Transporter GLUT1/SLC2A1 Antibody (orb259612)

Description

Glucose Transporter GLUT1/SLC2A1 Antibody


Species/Host

Rabbit

Reactivity

Human, Mouse, Rat

Conjugation

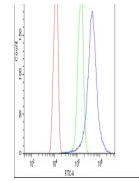
Unconjugated

Tested Applications

FC, ICC, IF, IHC, IHC-Fr, WB

Immunogen

E.coli-derived human SLC2A1 recombinant protein (Position: R92-V492). Human SLC2A1 shares 98% and 98.3% amino acid (aa) sequence identity with mouse and rat SLC2A1, respectively.



Flow Cytometry analysis of A431 cells us...

Form/Appearance

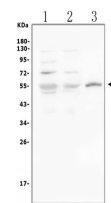
Lyophilized

Concentration

Adding 0.2 ml of distilled water will yield a concentration of 500 µg/ml.

Storage

Store at -20°C for one year from date of receipt. After reconstitution, at 4°C for one month. It can also be aliquotted and stored frozen at -20°C for six months. Avoid repeated freeze-thaw cycles.



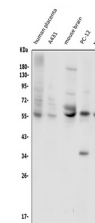
WB analysis of SLC2A1 using anti-SLC2A1 ...

Note

For research use only

Application notes

WB: The detection limit for SLC2A1 is approximately 0.1ng/lane under reducing conditions. Tested Species: In-house tested species with positive results. By Heat: Boiling the paraffin sections in 10mM citrate buffer, pH6.0, for 20mins is required for the staining of formalin/paraffin sections. Other applications have not been tested. Optimal dilutions should be determined by end users. . Add 0.2ml of distilled water will yield a concentration of 500ug/ml.



WB analysis of SLC2A1 using anti-SLC2A1 ...

Isotype

Rabbit IgG

Clonality

Polyclonal

MW

54084 MW

Uniprot ID
[P11166](https://www.uniprot.org/uniprot/P11166)
Expiration Date

12 months from date of receipt.