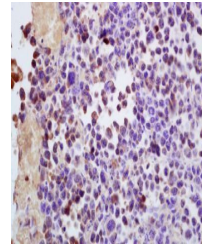


Product Datasheet

LMP2A antibody (orb2588)

Description	LMP2A antibody
Species/Host	Rabbit
Conjugation	Unconjugated
Tested Applications	ELISA, IF, IHC-Fr, IHC-P
Immunogen	KLH conjugated synthetic peptide derived from HHV4t2 LMP2A (401-497/497 aa)
Target	EBV LMP2A
Preservatives	0.01M TBS(pH7.4) with 1% rAlbumin, 0.03% Proclin300 and 50% Glycerol.
Form/Appearance	Liquid
Concentration	1mg/ml
Storage	Shipped at 4°C. Store at -20 °C for one year. Avoid repeated freeze/thaw cycles.
Note	For research use only
Isotype	IgG
Clonality	Polyclonal
MW	53 kDa
Uniprot ID	P13285
Expiration Date	12 months from date of receipt.



Immunohistochemical analysis of formalin...