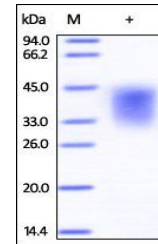


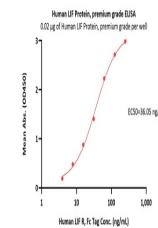
Product Datasheet

Human LIF Protein (orb257990)

Description	Human LIF Protein, premium grade is expressed from human 293 cells (HEK293). It contains AA Ser 23 -...
Reactivity	Human
Endotoxins	0.1 EU per µg
Conjugation	Unconjugated
Target	LIF
Preservatives	PBS, pH7.4
Form/Appearance	Powder
Storage	-20°C to -70°C for 12 months in lyophilized state; -70°C for 3 months under sterile conditions after reconstitution. For long term storage, the product should be stored at lyophilized state at -20°C or lower.
Tag	Native
Note	For research use only
Application notes	This protein carries no "tag". The protein has a calculated MW of 19.9 kDa. The protein migrates as 33-45 kDa under reducing (R) condition (SDS-PAGE) due to glycosylation.
Purity	90%
Source	Human LIF Protein, premium grade (orb257990) is expressed from human 293 cells (HEK293). It contains AA Ser 23 - Phe 202 (Accession # AAH69540.1).
MW	19.9 kDa
Uniprot ID	P15018
NCBI	AAH69540.1
Expiration Date	6 months from date of receipt.



SDS-PAGE analysis of Human LIF protein



Immobilized Human LIF Protein, premium g...