

---

## Product Datasheet

### Rhesus macaque CD40 / TNFRSF5 Protein (orb257960)

**Description**

Rhesus macaque CD40, Fc Tag is expressed from


**Reactivity** Arg ...

**Reactivity** Monkey

**Endotoxins** 1.0 EU per µg

**Conjugation** Unconjugated

**Target** CD40

**Preservatives** Tris, Glycine and NaCl, pH7.5

**Form/Appearance** Powder

**Storage** -20°C

**Tag** C-Fc

**Note** For research use only

**Application notes** This protein carries a human IgG1 Fc tag at the C-terminus. The protein has a calculated MW of 45.9 kDa. The protein migrates as 50-60kDa under reducing (R) condition (SDS-PAGE) due to glycosylation.

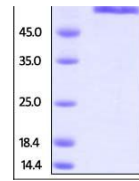
**Protein Sequence** NP\_001252791.1

**Purity** 95%

**Source** Rhesus macaque CD40, Fc Tag (orb257960) is expressed from human 293 cells (HEK293). It contains AA Glu 21 - Arg 193 (Accession # NP\_001252791.1).

**MW** 45.9 kDa

**Uniprot ID** NP\_001252791.1

**NCBI** [NP\\_001252791.1](https://www.ncbi.nlm.nih.gov/nuccore/NP_001252791.1)
**Expiration Date** 6 months from date of receipt.


SDS-PAGE analysis of Monkey CD40 protein