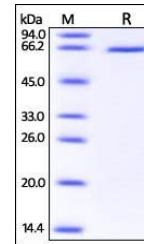


## Product Datasheet

### Human DLL1 / Delta1 Protein (orb257943)

<b>Description</b>	Human DLL1, His Tag is expressed from human 293 cells (HEK293). It contains AA Gln 18 - Gly 540 (Acc...
<b>Reactivity</b>	Human
<b>Endotoxins</b>	0.01 EU per µg
<b>Conjugation</b>	Unconjugated
<b>Target</b>	DLL1
<b>Preservatives</b>	50 mM Tris, 150 mM NaCl, pH 7.5
<b>Form/Appearance</b>	Powder
<b>Storage</b>	-20°C
<b>Tag</b>	C-10×His
<b>Note</b>	For research use only
<b>Application notes</b>	This protein carries a polyhistidine tag at the C-terminus. The protein has a calculated MW of 58.4 kDa. The protein migrates as 60-65 kDa under reducing (R) condition (SDS-PAGE) due to glycosylation.
<b>Protein Sequence</b>	NP_005609
<b>Purity</b>	95%
<b>Source</b>	Human DLL1, His Tag (orb257943) is expressed from human 293 cells (HEK293). It contains AA Gln 18 - Gly 540 (Accession # NP_005609).
<b>MW</b>	58.4 kDa
<b>Uniprot ID</b>	<b>O00548</b>
<b>NCBI</b>	<b>NP_005609</b>
<b>Expiration Date</b>	6 months from date of receipt.



SDS-PAGE analysis of Human DLL1 protein