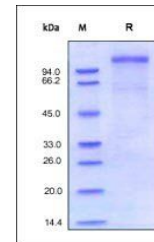


Product Datasheet

Human VLDL R Protein (orb257929)

Description	Human VLDL R, His Tag is expressed from human 293 cells (HEK293). It contains AA Gly 28 - Ser 769 (A...
Reactivity	Human
Endotoxins	1.0 EU per µg
Conjugation	Unconjugated
Target	VLDL R
Preservatives	PBS, pH7.4
Form/Appearance	Powder
Storage	-20°C
Tag	C-10×His
Note	For research use only
Application notes	This protein carries a polyhistidine tag at the C-terminus. The protein has a calculated MW of 84.0 kDa. The protein migrates as 90-110 kDa when calibrated against Star Ribbon Pre-stained Protein Marker under reducing (R) condition (SDS-PAGE) due to different glycosylation.
Protein Sequence	NP_001018066.1
Purity	90%
Source	Human VLDL R, His Tag (orb257929) is expressed from human 293 cells (HEK293). It contains AA Gly 28 - Ser 769 (Accession # P98155-2).
MW	84.0 kDa
Uniprot ID	P98155
NCBI	NP_001018066.1
Expiration Date	6 months from date of receipt.



SDS-PAGE analysis of Human VLDL R protei...