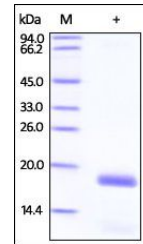


Product Datasheet

Human Stathmin 1 / STMN1 Protein (orb257855)

Description	Human Stathmin 1, His Tag is expressed from E. coli cells. It contains AA Ala 2 - Asp 149 (Accession...
Reactivity	Human
Endotoxins	1.0 EU per µg
Conjugation	Unconjugated
Target	Stathmin 1
Preservatives	PBS, pH7.4
Form/Appearance	Powder
Storage	-20°C
Tag	N-6×His
Note	For research use only
Application notes	This protein carries a polyhistidine tag at the N-terminus. The protein has a calculated MW of 18.1 kDa. The protein migrates as 18 kDa when calibrated against Star Ribbon Pre-stained Protein Marker under reducing (R) condition (SDS-PAGE).
Protein Sequence	NP_981946
Purity	95%
Source	Human Stathmin 1, His Tag (orb257855) is expressed from E.coli cells. It contains AA Ala 2 - Asp 149 (Accession # NP_981946).
MW	18.1 kDa
Uniprot ID	P16949
NCBI	NP_981946
Expiration Date	6 months from date of receipt.



SDS-PAGE analysis of Human Stathmin 1 pr...