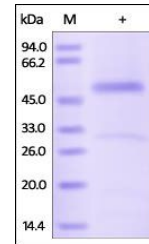


Product Datasheet

Human Serpin H1 Protein (orb257829)

Description	Human Serpin H1, His Tag is expressed from human 293 cells (HEK293). It contains AA Ala 19 - Leu 418...
Reactivity	Human
Endotoxins	1.0 EU per µg
Conjugation	Unconjugated
Target	Serpin H1
Preservatives	PBS, pH7.4
Form/Appearance	Powder
Storage	-20°C
Tag	C-7×His
Note	For research use only
Application notes	This protein carries a polyhistidine tag at the C-terminus. The protein has a calculated MW of 45.5 kDa. The protein migrates as 48-55 kDa under reducing (R) condition (SDS-PAGE) due to glycosylation.
Protein Sequence	NP_001226.2
Purity	90%
Source	Human Serpin H1, His Tag (orb257829) is expressed from human 293 cells (HEK293). It contains AA Ala 19 - Leu 418 (Accession # P50454-1).
MW	45.5 kDa
Uniprot ID	P50454
NCBI	NP_001226.2
Expiration Date	6 months from date of receipt.



SDS-PAGE analysis of Human Serpin H1 pro...