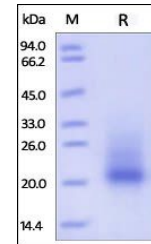


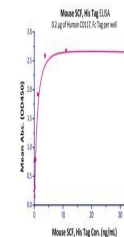
Product Datasheet

Mouse SCF / KITLG Protein (orb257825)

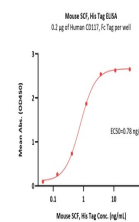
Description	Mouse SCF, His Tag is expressed from human 293 cells (HEK293). It contains AA Lys 26 - Ala 189 (Acce...
Reactivity	Mouse
Endotoxins	1.0 EU per µg
Conjugation	Unconjugated
Target	SCF
Preservatives	PBS, pH7.4
Form/Appearance	Powder
Storage	-20°C to -70°C for 12 months in lyophilized state; -70°C for 3 months under sterile conditions after reconstitution. For long term storage, the product should be stored at lyophilized state at -20°C or lower.
Tag	C-9×His
Note	For research use only
Application notes	This protein carries a polyhistidine tag at the C-terminus. The protein has a calculated MW of 19.5 kDa. The protein migrates as 19-30 kDa under reducing (R) condition (SDS-PAGE) due to different glycosylation.
Purity	95%
Source	Mouse SCF, His Tag (orb257825) is expressed from human 293 cells (HEK293). It contains AA Lys 26 - Ala 189 (Accession # NP_038626).
MW	19.5 kDa
Uniprot ID	P20826
NCBI	NP_038626
Expiration Date	6 months from date of receipt.



SDS-PAGE analysis of Mouse SCF protein



Line graph illustrates about the sensiti...



Immobilized Human CD117, Fc Tag (Cat. No...