

---

## Product Datasheet

### Human R-Spondin 1 / RSP01 (21-146) Protein (orb257809)

**Description**

Human R-Spondin 1 (21-146), His Tag, premium



(HEK293). It co...

**Reactivity**

Human

**Endotoxins**

1.0 EU per µg

**Conjugation**

Unconjugated

**Target**

R-Spondin 1

**Preservatives**

PBS, pH7.4

**Form/Appearance**

Powder

**Storage**

-20°C

**Tag**

C-6×His

**Note**

For research use only

**Application notes**

This protein carries a polyhistidine tag at the C-terminus. The protein has a calculated MW of 14.6 kDa. The protein migrates as 19-25 kDa under reducing (R) condition (SDS-PAGE) due to glycosylation.

**Protein Sequence**

AAI14967

**Purity**

90%

**Source**

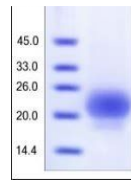
Human R-Spondin 1 (21-146), His Tag, premium grade (orb257809) is expressed from human 293 cells (HEK293). It contains AA Ser 21 - Ala 146 (Accession # AAI14967).

**MW**

14.6 kDa

**Uniprot ID**
[Q2MKA7](https://www.uniprot.org/uniprot/Q2MKA7)
**NCBI**
[AAI14967](https://www.ncbi.nlm.nih.gov/nuccore/AAI14967)
**Expiration Date**

6 months from date of receipt.



SDS-PAGE analysis of Human R-Spondin 1 p...