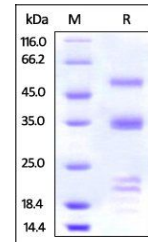


## Product Datasheet

### Human PLAU / uPA Protein (orb257779)

<b>Description</b>	Human PLAU, His Tag is expressed from human 293 cells (HEK293). It contains AA Ser 21 - Leu 431 (Acc...
<b>Reactivity</b>	Human
<b>Endotoxins</b>	1.0 EU per µg
<b>Conjugation</b>	Unconjugated
<b>Target</b>	PLAU
<b>Preservatives</b>	50 mM Sodium Acetate, 100 mM NaCl, pH5.0
<b>Form/Appearance</b>	Powder
<b>Storage</b>	-20°C
<b>Tag</b>	C-6×His
<b>Note</b>	For research use only
<b>Application notes</b>	Human PLAU, His Tag is fused with a polyhistidine tag at the C-terminus, and has a calculated MW of 47.2 kDa. The protein migrates as 45-60 kDa under reducing (R) condition (SDS-PAGE) due to glycosylation. Please note that the protein is not activated by protease digestion. In vitro activation is generally recommended for higher activity.
<b>Protein Sequence</b>	NP_002649.1
<b>Purity</b>	92%
<b>Source</b>	Human PLAU, His Tag (orb257779) is expressed from human 293 cells (HEK293). It contains AA Ser 21 - Leu 431 (Accession # NP_002649.1).
<b>MW</b>	47.2 kDa
<b>Uniprot ID</b>	<b>P00749</b>
<b>NCBI</b>	<b>NP_002649.1</b>
<b>Expiration Date</b>	6 months from date of receipt.



SDS-PAGE analysis of Human PLAU protein