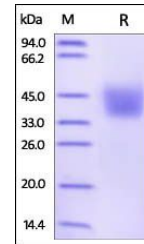


## Product Datasheet

### Human PD-L2 / B7-DC Protein (orb257767)

<b>Description</b>	Human PD-L2 Protein, His Tag is expressed from human 293 cells (HEK293). It contains AA Leu 20 - Pro...
<b>Reactivity</b>	Human
<b>Endotoxins</b>	1.0 EU per µg
<b>Conjugation</b>	Unconjugated
<b>Target</b>	PD-L2
<b>Preservatives</b>	PBS, pH7.4
<b>Form/Appearance</b>	Powder
<b>Storage</b>	-20°C
<b>Tag</b>	C-6×His
<b>Note</b>	For research use only
<b>Application notes</b>	This protein carries a polyhistidine tag at the C-terminus. The protein has a calculated MW of 23.4 kDa. The protein migrates as 34-46 kDa under reducing (R) condition (SDS-PAGE) due to glycosylation.
<b>Protein Sequence</b>	AAI13679
<b>Purity</b>	95%
<b>Source</b>	Human PD-L2, His Tag (SPR verified) (orb257767) is expressed from human 293 cells (HEK293). It contains AA Leu 20 - Pro 219 (Accession # AAI13679).
<b>MW</b>	23.4 kDa
<b>Uniprot ID</b>	<a href="#">Q9BQ51</a>
<b>NCBI</b>	<a href="#">AAI13679</a>
<b>Expiration Date</b>	6 months from date of receipt.



SDS-PAGE analysis of Human PD-L2 protein