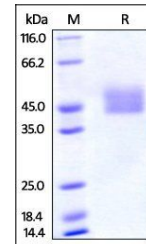


Product Datasheet

Mouse PD-L1 / B7-H1 Protein (orb257762)

Description	Mouse PD-L1, His Tag is expressed from human 293 cells (HEK293). It contains AA Phe 19 - Thr 238 (Ac...
Reactivity	Mouse
Endotoxins	1.0 EU per µg
Conjugation	Unconjugated
Target	PD-L1
Preservatives	PBS, pH7.4
Form/Appearance	Powder
Storage	-20°C
Tag	C-10×His
Note	For research use only
Application notes	This protein carries a polyhistidine tag at the C-terminus. The protein has a calculated MW of 26.6 kDa. The protein migrates as 40-50 kDa under reducing (R) condition (SDS-PAGE) due to glycosylation.
Protein Sequence	NP_068693
Purity	95%
Source	Mouse PD-L1, His Tag (orb257762) is expressed from human 293 cells (HEK293). It contains AA Phe 19 - Thr 238 (Accession # NP_068693).
MW	26.6 kDa
Uniprot ID	Q9EP73
NCBI	NP_068693
Expiration Date	6 months from date of receipt.



SDS-PAGE analysis of Mouse PD-L1 protein