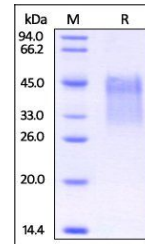


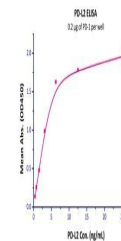
## Product Datasheet

### Human PD-1 / PDCD1 Protein (orb257756)

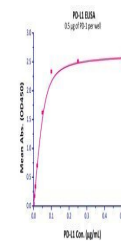
<b>Description</b>	Human PD-1 Protein, Twin-Strep Tag is expressed from human 293 cells (HEK293). It contains AA Leu 25...
<b>Reactivity</b>	Human
<b>Endotoxins</b>	1.0 EU per µg
<b>Conjugation</b>	Unconjugated
<b>Target</b>	PD-1
<b>Preservatives</b>	PBS, pH7.4
<b>Form/Appearance</b>	Powder
<b>Storage</b>	-20°C
<b>Tag</b>	C-Twin-Strep
<b>Note</b>	For research use only
<b>Application notes</b>	This protein carries a twin strep tag at the C-terminus. The protein has a calculated MW of 19.0 kDa. The protein migrates as 30-45 kDa under reducing (R) condition (SDS-PAGE) due to glycosylation.
<b>Protein Sequence</b>	NP 005009.2
<b>Purity</b>	90%
<b>Source</b>	Human PD-1, Strep Tag (orb257756) is expressed from human 293 cells (HEK293). It contains AA Leu 25 - Gln 167 (Accession # Q15116-1).
<b>MW</b>	19.0 kDa
<b>Uniprot ID</b>	<a href="#">Q15116</a>
<b>NCBI</b>	<a href="#">005009.2</a>
<b>Expiration Date</b>	6 months from date of receipt.



SDS-PAGE analysis of Human PD-1 protein



Line graph illustrates about the sensitivity...



Line graph illustrates about the sensitivity...