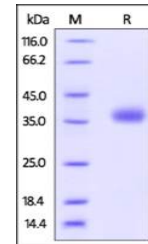


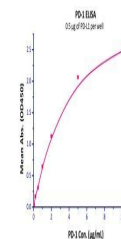
## Product Datasheet

### Human PD-L1 / B7-H1 Protein (orb257752)

<b>Description</b>	Human PD-L1, His Tag is expressed from human 293 cells (HEK293). It contains AA Phe 19 - Arg 238 (Ac...
<b>Reactivity</b>	Human
<b>Endotoxins</b>	1.0 EU per µg
<b>Conjugation</b>	Unconjugated
<b>Target</b>	PD-L1
<b>Preservatives</b>	PBS, pH7.4
<b>Form/Appearance</b>	Powder
<b>Storage</b>	-20°C
<b>Tag</b>	C-6×His
<b>Note</b>	For research use only
<b>Application notes</b>	This protein carries a polyhistidine tag at the C-terminus. The protein has a calculated MW of 26.0 kDa. The protein migrates as 30-35 kDa when calibrated against Star Ribbon Pre-stained Protein Marker under reducing (R) condition (SDS-PAGE) due to glycosylation.
<b>Protein Sequence</b>	NP_054862.1
<b>Purity</b>	98%
<b>Source</b>	Human PD-L1, His Tag (orb257752) is expressed from human 293 cells (HEK293). It contains AA Phe 19 - Arg 238 (Accession # NP_054862.1 ).
<b>MW</b>	26.0 kDa
<b>Uniprot ID</b>	<a href="#">Q9NZQ7</a>
<b>NCBI</b>	<a href="#">NP_054862.1</a>
<b>Expiration Date</b>	6 months from date of receipt.



SDS-PAGE analysis of Human PD-L1 protein



Line graph illustrates about the sensitivity...