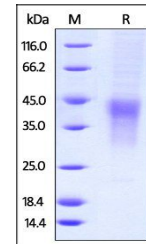


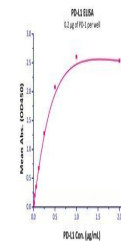
Product Datasheet

Human PD-1 / PDCD1 Protein (orb257751)

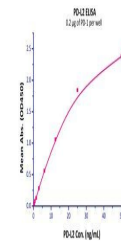
Description	Human PD-1, His Tag is expressed from human 293 cells (HEK293). It contains AA Leu 25 - Gln 167 (Acc...
Reactivity	Human
Endotoxins	1.0 EU per µg
Conjugation	Unconjugated
Target	PD-1
Preservatives	PBS, pH7.4
Form/Appearance	Powder
Storage	-20°C
Tag	C-6×His
Note	For research use only
Application notes	This protein carries a polyhistidine tag at the C-terminus. The protein has a calculated MW of 16.8 kDa. The protein migrates as 33-38 kDa when calibrated against Star Ribbon Pre-stained Protein Marker under reducing (R) condition (SDS-PAGE) due to glycosylation.
Protein Sequence	NP_005009.2
Purity	95%
Source	Human PD-1, His Tag (orb257751) is expressed from human 293 cells (HEK293). It contains AA Leu 25 - Gln 167 (Accession # NP_005009.2).
MW	16.8 kDa
Uniprot ID	Q15116
NCBI	NP_005009.2
Expiration Date	6 months from date of receipt.



SDS-PAGE analysis of Human PD-1 protein



Line graph illustrates about the sensitivity...



Line graph illustrates about the sensitivity...