

---

## Product Datasheet

**Cynomolgus / Rhesus macaque PD-L1 / B7-H1  
Protein (orb257750)**

**Description**

Cynomolgus / Rhesus macaque PD-L1, His Tag is


**Description** contains A...

**Reactivity** Monkey

**Endotoxins** 1.0 EU per µg

**Conjugation** Unconjugated

**Target** PD-L1

**Preservatives** PBS, pH7.4

**Form/Appearance** Powder

**Storage** -20°C

**Tag** C-10×His

**Note** For research use only

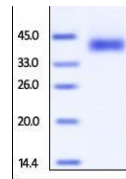
**Application notes** This protein carries a polyhistidine tag at the C-terminus. The protein has a calculated MW of 27.1 kDa. The protein migrates as 33-38 kDa under reducing (R) condition (SDS-PAGE) due to glycosylation.

**Protein Sequence** Phe 19 - Arg 238

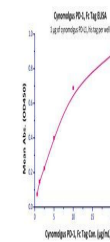
**Purity** 95%

**Source** Cynomolgus / Rhesus macaque PD-L1, His Tag (orb257750) is expressed from human 293 cells (HEK293). It contains AA Phe 19 - Arg 238 (Accession # G7PSE7-1). In the region Phe 19 - Arg 238, the AA sequence of Cynomolgus and Rhesus macaque PD-L1 are homologous.

**MW** 27.1 kDa

**Uniprot ID** [G7PSE7](#)
**Expiration Date** 6 months from date of receipt.


SDS-PAGE analysis of Monkey PD-L1 protei...



Line graph illustrates about the sensiti...