

## Product Datasheet

### Cynomolgus PD-1 / PDCD1 Protein (orb257749)

**Description** Cynomolgus PD-1, Fc Tag is expressed from human 293 cells (HEK293). It contains AA Leu 25 - Gln 167 ...

**Reactivity** Monkey

**Endotoxins** 1.0 EU per µg

**Conjugation** Unconjugated

**Target** PD-1

**Preservatives** 50 mM Tris, 100 mM Glycine, pH7.5

**Form/Appearance** Powder

**Storage** -20°C

**Tag** C-Fc

**Note** For research use only

**Application notes** This protein carries a human IgG1 Fc tag at the C-terminus. The protein has a calculated MW of 42.6 kDa. The protein migrates as 55-66 kDa under reducing (R) condition (SDS-PAGE) due to glycosylation.

**Protein Sequence** Leu 25 - Gln 167

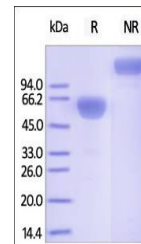
**Purity** 90%

**Source** Cynomolgus PD-1, Fc Tag (orb257749) is expressed from human 293 cells (HEK293). It contains AA Leu 25 - Gln 167 (Accession # B0LAJ3).

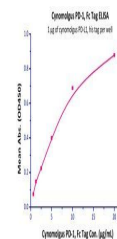
**MW** 42.6 kDa

**Uniprot ID** [B0LAJ3](#)

**Expiration Date** 6 months from date of receipt.



SDS-PAGE analysis of Monkey PD-1 protein



Line graph illustrates about the sensiti...