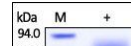

Product Datasheet

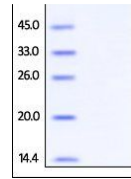
**Cynomolgus / Rhesus macaque PD-L1 / B7-H1
Protein (orb257748)**

Description

Cynomolgus / Rhesus macaque PD-L1, Fc Tag is



	contains AA...
Reactivity	Monkey
Endotoxins	1.0 EU per µg
Conjugation	Unconjugated
Target	PD-L1
Preservatives	PBS, pH7.4
Form/Appearance	Powder
Storage	-20°C
Tag	C-Fc
Note	For research use only
Application notes	This protein carries a human IgG1 Fc tag at the C-terminus. The protein has a calculated MW of 51.8 kDa. The protein migrates as 60-70 kDa under reducing (R) condition (SDS-PAGE) due to glycosylation.
Protein Sequence	XP_014973154.1
Purity	95%
Source	Cynomolgus / Rhesus macaque PD-L1, Fc Tag (orb257748) is expressed from human 293 cells (HEK293). It contains AA Phe 19 - Arg 238 (Accession # F6VEW6-1). In the region Phe 19 - Arg 238, the AA sequence of Cynomolgus and Rhesus macaque PD-L1 are homologous.
MW	51.8 kDa
Uniprot ID	F6VEW6
NCBI	XP_014973154.1
Expiration Date	6 months from date of receipt.



SDS-PAGE analysis of Monkey PD-L1 protei...