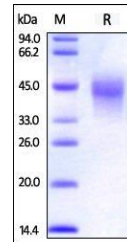


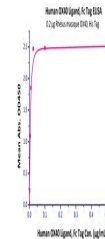
## Product Datasheet

# Cynomolgus / Rhesus macaque OX40 / TNFRSF4 / CD134 Protein (orb257726)

<b>Description</b>	Cynomolgus / Rhesus macaque OX40, His Tag is expressed from human 293 cells (HEK293). It contains AA...
<b>Reactivity</b>	Monkey
<b>Endotoxins</b>	1.0 EU per µg
<b>Conjugation</b>	Unconjugated
<b>Target</b>	OX40
<b>Preservatives</b>	PBS, pH7.4
<b>Form/Appearance</b>	Powder
<b>Storage</b>	-20°C
<b>Tag</b>	C-10×His
<b>Note</b>	For research use only
<b>Application notes</b>	This protein carries a polyhistidine tag at the C-terminus. The protein has a calculated MW of 22.1 kDa. The protein migrates as 33-50 kDa under reducing (R) condition (SDS-PAGE) due to glycosylation.
<b>Protein Sequence</b>	XP_001090870.1
<b>Purity</b>	95%
<b>Source</b>	Cynomolgus / Rhesus macaque OX40, His Tag (orb257726) is expressed from human 293 cells (HEK293). It contains AA Lys 28 - Ala 214 (Accession # XP_001090870.1).
<b>MW</b>	22.1 kDa
<b>NCBI</b>	<a href="#">XP_001090870.1</a>
<b>Expiration Date</b>	6 months from date of receipt.



SDS-PAGE analysis of Monkey OX40 protein



Line graph illustrates about the sensiti...