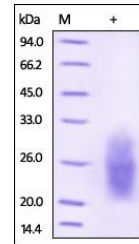


## Product Datasheet

### Human NKp30 / NCR3 / CD337 Protein (orb257705)

<b>Description</b>	Human NKp30, His Tag is expressed from human 293 cells (HEK293). It contains AA Leu 19 - Gly 135 (Ac...
<b>Reactivity</b>	Human
<b>Endotoxins</b>	1.0 EU per µg
<b>Conjugation</b>	Unconjugated
<b>Target</b>	NKp30
<b>Preservatives</b>	PBS, pH7.4
<b>Form/Appearance</b>	Powder
<b>Storage</b>	-20°C
<b>Tag</b>	C-6×His
<b>Note</b>	For research use only
<b>Application notes</b>	This protein carries a polyhistidine tag at the C-terminus. The protein has a calculated MW of 13.7 kDa. The protein migrates as 21-32 kDa under reducing (R) condition (SDS-PAGE) due to glycosylation.
<b>Protein Sequence</b>	AAH52582
<b>Purity</b>	95%
<b>Source</b>	Human NKp30, His Tag (orb257705) is expressed from human 293 cells (HEK293). It contains AA Leu 19 - Gly 135 (Accession # AAH52582).
<b>MW</b>	13.7 kDa
<b>Uniprot ID</b>	<a href="#">O14931</a>
<b>NCBI</b>	<a href="#">AAH52582</a>
<b>Expiration Date</b>	6 months from date of receipt.



SDS-PAGE analysis of Human NKp30 protein