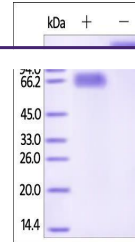

Product Datasheet

Human Mesothelin / MSLN (296-580) Protein (orb257698)

Description

Human Mesothelin (296-580), Fc Tag is expressed



SDS-PAGE analysis of Human Mesothelin pr...

| | |
|--------------------------|--|
| | 29... |
| Reactivity | Human |
| Endotoxins | 0.1 EU per µg |
| Conjugation | Unconjugated |
| Target | Mesothelin |
| Preservatives | PBS, pH7.4 |
| Form/Appearance | Powder |
| Storage | -20°C |
| Tag | N-Fc |
| Note | For research use only |
| Application notes | This protein carries a human IgG1 Fc tag at the N-terminus. The protein has a calculated MW of 59.1 kDa. The protein migrates as 60-68 kDa under reducing (R) condition (SDS-PAGE) due to glycosylation. |
| Protein Sequence | AAH09272 |
| Purity | 95% |
| Source | Human Mesothelin (296-580), Fc Tag (orb257698) is expressed from human 293 cells (HEK293). It contains AA Glu 296 - Gly 580 (Accession # AAH09272). |
| MW | 59.1 kDa |
| Uniprot ID | Q13421 |
| NCBI | AAH09272 |
| Expiration Date | 6 months from date of receipt. |