
Product Datasheet

Human Mesothelin / MSLN (37-286) Protein (orb257696)

Description

Human Mesothelin (37-286), His Tag is expressed



37...

Reactivity

Human

Endotoxins

1.0 EU per µg

Conjugation

Unconjugated

Target

Mesothelin

Preservatives

PBS, pH7.4

Form/Appearance

Powder

Storage

-20°C

Tag

C-6×His

Note

For research use only

Application notes

This protein carries a polyhistidine tag at the C-terminus. The protein has a calculated MW of 27.5 kDa. The protein migrates as 32 kDa under reducing (R) condition (SDS-PAGE) due to glycosylation.

Protein Sequence

AAH09272

Purity

95%

Source

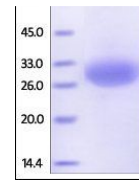
Human Mesothelin (37-286), His Tag (orb257696) is expressed from human 293 cells (HEK293). It contains AA Leu 37 - Arg 286 (Accession # AAH09272).

MW

27.5 kDa

Uniprot ID
[Q13421](https://www.uniprot.org/entry/Q13421)
NCBI
[AAH09272](https://www.ncbi.nlm.nih.gov/nuccore/AAH09272)
Expiration Date

6 months from date of receipt.



SDS-PAGE analysis of Human Mesothelin pr...