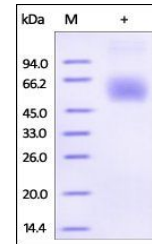


Product Datasheet

Human Lumican Protein (orb257678)

Description	Human Lumican, His Tag is expressed from human 293 cells (HEK293). It contains AA Gln 19 - Asn 338 (...)
Reactivity	Human
Endotoxins	1.0 EU per µg
Conjugation	Unconjugated
Target	Lumican
Preservatives	PBS, pH7.4
Form/Appearance	Powder
Storage	-20°C
Tag	C-6×His
Note	For research use only
Application notes	This protein carries a polyhistidine tag at the C-terminus. The protein has a calculated MW of 37.5 kDa. The protein migrates as 50-60 kDa under reducing (R) condition (SDS-PAGE) due to glycosylation.
Protein Sequence	NP_002336
Purity	95%
Source	Human Lumican, His Tag (orb257678) is expressed from human 293 cells (HEK293). It contains AA Gln 19 - Asn 338 (Accession # NP_002336).
MW	37.5 kDa
Uniprot ID	P51884
NCBI	NP_002336
Expiration Date	6 months from date of receipt.



SDS-PAGE analysis of Human Lumican prote...