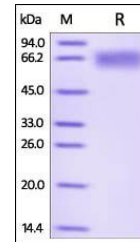


## Product Datasheet

### Human LILRB2 / CD85d / ILT4 Protein (orb257669)

<b>Description</b>	Human LILRB2, His Tag is expressed from human 293 cells (HEK293). It contains AA Gln 22 - Val 461 (A...
<b>Reactivity</b>	Human
<b>Endotoxins</b>	1.0 EU per µg
<b>Conjugation</b>	Unconjugated
<b>Target</b>	LILRB2
<b>Preservatives</b>	PBS, pH7.4
<b>Form/Appearance</b>	Powder
<b>Storage</b>	-20°C
<b>Tag</b>	C-6×His
<b>Note</b>	For research use only
<b>Application notes</b>	This protein carries a polyhistidine tag at the C-terminus. The protein has a calculated MW of 48.6 kDa. The protein migrates as 58-67 kDa under reducing (R) condition (SDS-PAGE) due to glycosylation.
<b>Protein Sequence</b>	AAH36827
<b>Purity</b>	95%
<b>Source</b>	Human LILRB2, His Tag (orb257669) is expressed from human 293 cells (HEK293). It contains AA Gln 22 - Val 461 (Accession # AAH36827).
<b>MW</b>	48.6 kDa
<b>Uniprot ID</b>	<a href="#">Q8N423</a>
<b>NCBI</b>	<a href="#">AAH36827</a>
<b>Expiration Date</b>	6 months from date of receipt.



SDS-PAGE analysis of Human LILRB2 protei...