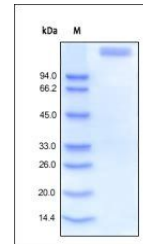


## Product Datasheet

### Human Leptin R / CD295 Protein (orb257667)

<b>Description</b>	Human Leptin R, Fc Tag is expressed from human 293 cells (HEK293). It contains AA Phe 22 - Asp 839 (...)
<b>Reactivity</b>	Human
<b>Endotoxins</b>	1.0 EU per µg
<b>Conjugation</b>	Unconjugated
<b>Target</b>	Leptin R
<b>Preservatives</b>	50 mM Tris, 100 mM Glycine, pH7.5
<b>Form/Appearance</b>	Powder
<b>Storage</b>	-20°C
<b>Tag</b>	C-Fc
<b>Note</b>	For research use only
<b>Application notes</b>	This protein carries a human IgG1 Fc tag at the C-terminus. The protein has a calculated MW of 119.6 kDa. The protein migrates as 150-165 kDa under reducing (R) condition (SDS-PAGE) due to glycosylation.
<b>Protein Sequence</b>	NP_002294.2
<b>Purity</b>	90%
<b>Source</b>	Human Leptin R, Fc Tag (orb257667) is expressed from human 293 cells (HEK293). It contains AA Phe 22 - Asp 839 (Accession # NP_002294.2).
<b>MW</b>	119.6 kDa
<b>Uniprot ID</b>	<a href="#">P48357</a>
<b>NCBI</b>	<a href="#">NP_002294.2</a>
<b>Expiration Date</b>	6 months from date of receipt.



SDS-PAGE analysis of Human Leptin R prot...