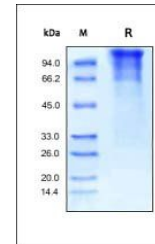


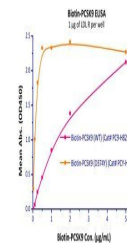
Product Datasheet

Human LDL R Protein (orb257663)

Description	Human LDL R, His Tag is expressed from human 293 cells (HEK293). It contains AA Ala 22 - Arg 788 (Ac...
Reactivity	Human
Endotoxins	1.0 EU per µg
Conjugation	Unconjugated
Target	LDL R
Preservatives	PBS, pH7.4
Form/Appearance	Powder
Storage	-20°C
Tag	C-6×His
Note	For research use only
Application notes	This protein carries a polyhistidine tag at the C-terminus. The protein has a calculated MW of 85.9 kDa. The protein migrates as 120-140 kDa under reducing (R) condition (SDS-PAGE) due to glycosylation.
Protein Sequence	NP_000518.1
Purity	90%
Source	Human LDL R, His Tag (orb257663) is expressed from human 293 cells (HEK293). It contains AA Ala 22 - Arg 788 (Accession # NP_000518.1).
MW	85.9 kDa
Uniprot ID	P01130
NCBI	NP_000518.1
Expiration Date	6 months from date of receipt.



SDS-PAGE analysis of Human LDL R protein



Line graph illustrates about the sensitivity...