

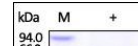
---

## Product Datasheet

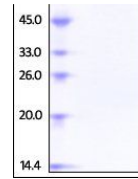
### Human LBP / Lipopolysaccharide Protein (orb257660)

**Description**

Human Lipopolysaccharide, His Tag is expressed



<b>Reactivity</b>	Human
<b>Endotoxins</b>	1.0 EU per µg
<b>Conjugation</b>	Unconjugated
<b>Target</b>	Lipopolysaccharide-binding protein / LBP
<b>Preservatives</b>	PBS, pH7.4
<b>Form/Appearance</b>	Powder
<b>Storage</b>	-20°C
<b>Tag</b>	C-10×His
<b>Note</b>	For research use only
<b>Application notes</b>	This protein carries a polyhistidine tag at the C-terminus. The protein has a calculated MW of 52.8 kDa. The protein migrates as 62 kDa under reducing (R) condition (SDS-PAGE) due to glycosylation.
<b>Protein Sequence</b>	NP_004130.2 (I465F)
<b>Purity</b>	95%
<b>Source</b>	Human Lipopolysaccharide, His Tag (orb257660) is expressed from human 293 cells (HEK293). It contains AA Ala 26 - Val 481 (Accession # P18428-1 (I465F)).
<b>MW</b>	52.8 kDa
<b>Uniprot ID</b>	<b>P18428</b>
<b>NCBI</b>	<b>I465, NP_004130.2</b>
<b>Expiration Date</b>	6 months from date of receipt.



SDS-PAGE analysis of Human LBP protein