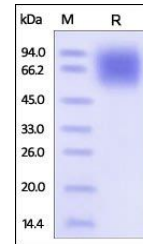


Product Datasheet

Human LAMP1 / CD107a Protein (orb257657)

Description	Human LAMP1, His Tag is expressed from human 293 cells (HEK293). It contains AA Ala 29 - Met 382 (Ac...
Reactivity	Human
Endotoxins	1.0 EU per µg
Conjugation	Unconjugated
Target	LAMP1
Preservatives	PBS, pH7.4
Form/Appearance	Powder
Storage	-20°C
Tag	C-6×His
Note	For research use only
Application notes	This protein carries a polyhistidine tag at the C-terminus. The protein has a calculated MW of 39.2 kDa. The protein migrates as 55-95 kDa under reducing (R) condition (SDS-PAGE) due to different glycosylation.
Protein Sequence	NP_005552
Purity	95%
Source	Human LAMP1, His Tag (orb257657) is expressed from human 293 cells (HEK293). It contains AA Ala 29 - Met 382 (Accession # NP_005552).
MW	39.2 kDa
Uniprot ID	P11279
NCBI	NP_005552
Expiration Date	6 months from date of receipt.



SDS-PAGE analysis of Human LAMP1 protein