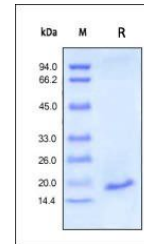


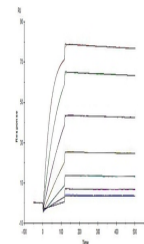
## Product Datasheet

### Human IL-1 beta / IL-1F2 Protein (orb257615)

<b>Description</b>	Human IL-1 beta, premium grade is expressed from E. coli cells. It contains AA Ala 117 - Ser 269 (Ac...
<b>Reactivity</b>	Human
<b>Endotoxins</b>	0.01 EU per µg
<b>Conjugation</b>	Unconjugated
<b>Target</b>	IL-1 beta
<b>Preservatives</b>	PBS, pH7.4
<b>Form/Appearance</b>	Powder
<b>Storage</b>	-20°C to -70°C for 12 months in lyophilized state; -70°C for 3 months under sterile conditions after reconstitution. For long term storage, the product should be stored at lyophilized state at -20°C or lower.
<b>Tag</b>	Native
<b>Note</b>	For research use only
<b>Application notes</b>	This protein carries no "tag". The protein has a calculated MW of 17.5 kDa. The protein migrates as 18 kDa±3 kDa when calibrated against Star Ribbon Pre-stained Protein Marker under reducing (R) condition (SDS-PAGE).
<b>Purity</b>	95%
<b>Source</b>	Human IL-1 beta, premium grade (orb257615) is expressed from E. coli cells. It contains AA Ala 117 - Ser 269 (Accession # P01584-1).
<b>MW</b>	17.5 kDa
<b>Uniprot ID</b>	<b>P01584</b>
<b>NCBI</b>	<b>NP_000567.1</b>
<b>Expiration Date</b>	6 months from date of receipt.



SDS-PAGE analysis of Human IL-1 beta pro...



Human IL-1 RII, Fc Tag (Cat. No. orb2575...