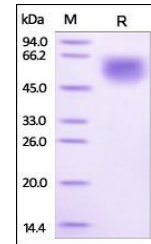


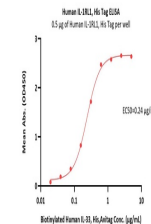
## Product Datasheet

### Human IL-1RL1 / ST2 Protein (orb257582)

<b>Description</b>	Human IL-1RL1, His Tag is expressed from human 293 cells (HEK293). It contains AA Lys 19 - Phe 328 (...)
<b>Reactivity</b>	Human
<b>Endotoxins</b>	1.0 EU per µg
<b>Conjugation</b>	Unconjugated
<b>Target</b>	IL-1RL1
<b>Preservatives</b>	PBS, pH7.4
<b>Form/Appearance</b>	Powder
<b>Storage</b>	-20°C to -70°C for 12 months in lyophilized state; -70°C for 3 months under sterile conditions after reconstitution. For long term storage, the product should be stored at lyophilized state at -20°C or lower.
<b>Tag</b>	C-10×His
<b>Note</b>	For research use only
<b>Application notes</b>	This protein carries a polyhistidine tag at the C-terminus. The protein has a calculated MW of 36.9 kDa. The protein migrates as 48-60 kDa under reducing (R) condition (SDS-PAGE) due to glycosylation.
<b>Purity</b>	95%
<b>Source</b>	Human IL-1RL1, His Tag (orb257582) is expressed from human 293 cells (HEK293). It contains AA Lys 19 - Phe 328 (Accession # Q01638-2).
<b>MW</b>	36.9 kDa
<b>Uniprot ID</b>	<a href="#">Q01638</a>
<b>NCBI</b>	<a href="#">NP_003847.2</a>
<b>Expiration Date</b>	6 months from date of receipt.



SDS-PAGE analysis of Human IL-1RL1 prote...



Immobilized Human IL-1RL1, His Tag (Cat....