
Product Datasheet

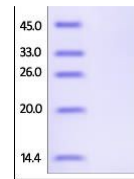
Human Serpin D1 / Heparin Cofactor II Protein (orb257535)

Description

Human Serpin D1, His Tag is expressed from



	Ser 499...
Reactivity	Human
Endotoxins	1.0 EU per µg
Conjugation	Unconjugated
Target	Serpin D1
Preservatives	50 mM Tris, 150 mM NaCl, pH 7.5
Form/Appearance	Powder
Storage	-20°C
Tag	C-6×His
Note	For research use only
Application notes	This protein carries a polyhistidine tag at the C-terminus. The protein has a calculated MW of 55.7 kDa. The protein migrates as 66-80 kDa under reducing (R) condition (SDS-PAGE) due to glycosylation.
Protein Sequence	AAH35028
Purity	95%
Source	Human Serpin D1, His Tag (orb257535) is expressed from human 293 cells (HEK293). It contains AA Gly 20 - Ser 499 (Accession # AAH35028).
MW	55.7 kDa
Uniprot ID	P05546
NCBI	AAH35028
Expiration Date	6 months from date of receipt.



SDS-PAGE analysis of Human Serpin D1 pro...