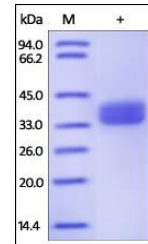


Product Datasheet

Human GPA33 / A33 Protein (orb257515)

Description	Human GPA33, His Tag is expressed from human 293 cells (HEK293). It contains AA Ile 22 - Val 235 (Ac...
Reactivity	Human
Endotoxins	1.0 EU per µg
Conjugation	Unconjugated
Target	GPA33
Preservatives	PBS, pH7.4
Form/Appearance	Powder
Storage	-20°C
Tag	C-6×His
Note	For research use only
Application notes	This protein carries a polyhistidine tag at the C-terminus. The protein has a calculated MW of 24.4 kDa. The protein migrates as 33-35 kDa under reducing (R) condition (SDS-PAGE) due to glycosylation.
Protein Sequence	AAH74830
Purity	96%
Source	Human GPA33, His Tag (orb257515) is expressed from human 293 cells (HEK293). It contains AA Ile 22 - Val 235 (Accession # AAH74830).
MW	24.4 kDa
Uniprot ID	Q99795
NCBI	AAH74830
Expiration Date	6 months from date of receipt.



SDS-PAGE analysis of Human GPA33 protein